



Arundel Court Hill Turrets Close, Sheffield S11 9RF

Saxton Mee

Lettings

Arundel Court Hill Turrets

Per Calendar Month

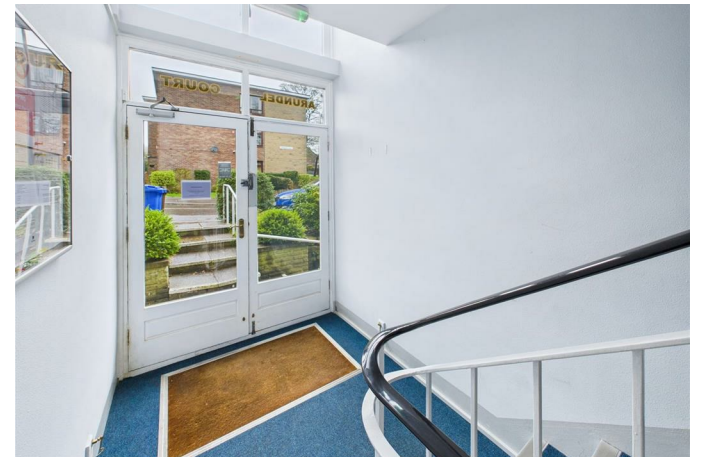
£1,100 Per Calendar

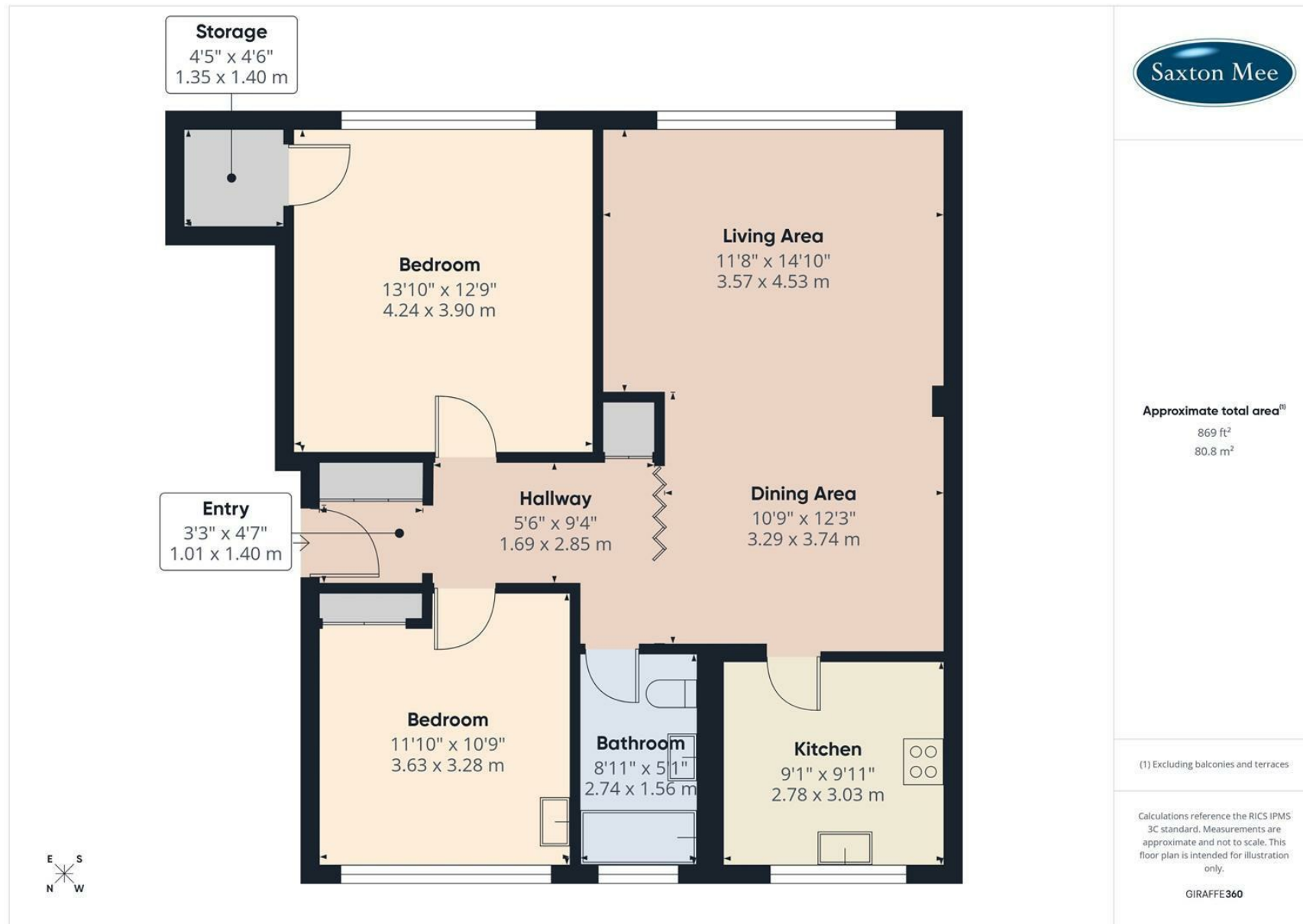
Ideally situated in a highly sought after residential area, this spacious and beautifully presented two bedroom second floor apartment offers modern living with excellent convenience. The property is perfectly placed for access to local amenities and frequent bus services directly to the City Centre.

The accommodation opens with a communal staircase leading to a welcoming entrance hallway with excellent storage. The heart of the home features a generous open plan lounge / dining room, providing ample space for entertaining. The fitted kitchen comes complete with appliances, while the sleeping quarters consist of two well proportioned double bedrooms. A contemporary bathroom with a white three piece suite and shower over completes the interior.

This property is offered unfurnished and is available on a 6 or 12 month tenancy. Please note that smoking is not permitted within the property. We are waiting on the Energy Efficiency Rating and the Council Tax Band is C.







While we endeavour to make our sales particulars fair, accurate and reliable, they are only a general guide to the property and, accordingly, if there is any point, which is of particular importance to you, please contact the relevant office. The Agents have not tested any apparatus, equipment, fittings or services and so cannot verify they are in working order. The buyer is advised to obtain verification. Please note all the measurement details are approximate and should not be relied upon as exact. All plans, floor plans and maps are for guidance purposes only and are not to scale. Under no circumstances should they be relied upon as exact or for use in planning carpets and other such fixtures, fittings or furnishings. YOUR HOME IS AT RISK IF YOU DO NOT KEEP UP REPAYMENTS ON A MORTGAGE OR OTHER LOAN SECURED ON IT. 'A Life Assurance policy may be requested.' 'Written Quotations of credit terms available on request.'

Banner Cross
T: 0114 268 3241
E: bannercross@saxtonmee.co.uk
www.saxtonmee.co.uk

Hathersage
T: 01433 650009
E: hathersage@saxtonmee.co.uk

Bakewell
T: 01629 815307
E: bakewell@saxtonmee.co.uk

Matlock
T: 01629 828250
E: matlock@saxtonmee.co.uk